



BIER

PILSENER:

Bottom-fermented, crisp, dry and well-hopped flavor with a light golden color.

DRAFT: Eggenberger Pils (Hopfenkönig) .5 liter \$9

BOTTLE: Schönramer Pils .5 liter \$11

HELLES:

Fresh, honey forward Golden Munich style lagers with balanced malt and hops.

DRAFT: Andechs Vollbier .5 liter \$9, Weltenburger Helles .5 liter \$9

BOTTLE: Augustiner (Edelstoff) .3 liter \$10

DEUTSCHE SPEZIALITÄTEN \ FESTBIER:

Regional German specialties, rare and limited edition offerings.

DRAFT: Früh Kölsch .2 liter \$5 / .4 liter \$9, St. Georgenbräu Kellerbier .5 liter \$10, Hofbräuhaus Traunstein Festbier .5 liter \$9, Schlenkerla Fastenbier (unfiltered smokebeer) .5 liter \$11

BOTTLE: Bayerischer Banhoff Leipziger Gose .3 liter \$11, Schlenkerla Märzen (smokebeer) .5 liter \$11, Uerige Alt .3 liter \$9, Uerige Jrön .3 liter \$9, Schlenkerla Urbock (smokebeer) .5 liter \$11

HEFEWEIZEN:

Top-fermented, fruity, usually unfiltered and brewed using a percentage of malted wheat.

DRAFT: Weihenstephaner Hefeweissen .5 liter \$9, Erdinger Weisse .5 liter \$9, Erdinger Dunkelweisse .5 liter \$9, Schwendl Weisser Bock .5 liter \$10, Schwendl Ursprung .5 liter \$9, Schneider Porter Weisse (Tap X) .5 liter \$11, Schneider Weisse Original .5 liter \$9, Schneider Aventinus (Doppelbock wheat-beer) .5 liter \$11

BOTTLE: Schwendl Silent Night .5 liter \$10, Weihenstephaner Hefeweissen .5 liter \$9, Weihenstephaner Dunkelweissen .5 liter \$9, Weihenstephaner Kristall .5 liter \$9, Schneider Weisse Original .5 liter \$9, Schneider Edel-Weisse (organic) .5 liter \$10, Schneider Hopfenweisse (Weisen Bock) .5 liter \$10, Schlenkerla Weisse (smoked wheat-beer) .5 liter \$11



BIER

BOCK \ DOPPELBOCK:

Blackened-copper to rich brown-black, forward malt flavors, increased complexity and alcohol.

DRAFT: Hofbräuhaus Traunstein Maximilian .5 liter \$9

BOTTLE: Augustiner Maximator .3 liter \$10, Ettaler Curator .5 liter \$11, Ettaler Hellerbock .5 liter \$10, Schlenkerla Oak Smoke (Doppelbock smokebeer) .5 liter \$11, Schneider Aventinus (Doppelbock wheat-beer) \$11, Schneider Aventinus Eisbock (ice-Doppelbock wheat-beer) .3 liter \$10, 2009 Schneider Aventinus (vintage Doppelbock wheat-beer) .5 liter \$22, Schneider Eisbock Barrique (Tap X) 375 ml \$30

SCHWARZBIER \ DUNKEL:

Dark lagers with flavors of cool chocolate, coffee, caramel and molasses.

DRAFT: Köstritzer Schwarzbier .5 liter \$9, Ettaler Dunkel .5 liter \$10

MIXED BEER DRINKS & OTHER:

Beer, but more.

DRAFT: Radler (Helles w/ Sparkling Lemonade) .5 liter \$9, Bananen Weizen (Hefeweizen w/ Banana Juice) .5 liter \$10, Ruß (Dunkel Weiss w/ Lemon Soda) .5 liter \$9

BOTTLE: South City dry cider 500 ml \$10

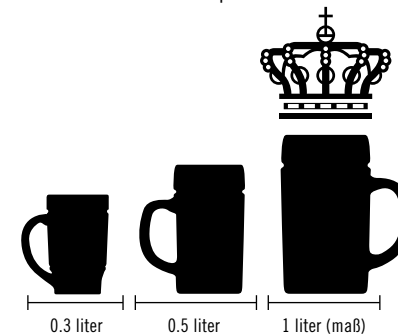
CAN: Stiegl Grapefruit Radler .5 liter \$8

NON-ALCOHOLIC:

German Beers without the alcohol.

BOTTLE: Erdinger (Weissbier) NA .3 liter \$6

CAN: Einbecker Pilsner NA .3 liter \$7





WEIN

WEIßWEIN:

GRÜNER VELTLINER:	Ebner-Ebanauer (A)	\$9 \ \$34
WEISSBURGUNDER:	Gut Hermannsberg (D)	\$9 \ \$34
RIESLING (SPÄTLESE):	Wehlener Sonnenuhr (D)	\$9 \ \$34
RIESLING (KABINETT):	Dr. L (D)	\$8 \ \$30
RIESLING (TROCKEN):	Villa Wolfe (D)	\$12 \ \$40
MUSCAT:	Zanthos (A)	\$10 \ \$38
FRANKEN TROCKEN:	Schieferkopf Silvaner (D)	\$12 \ \$40
SPARKLING:	Gut Hermannsberg (D)	\$11 \ \$40

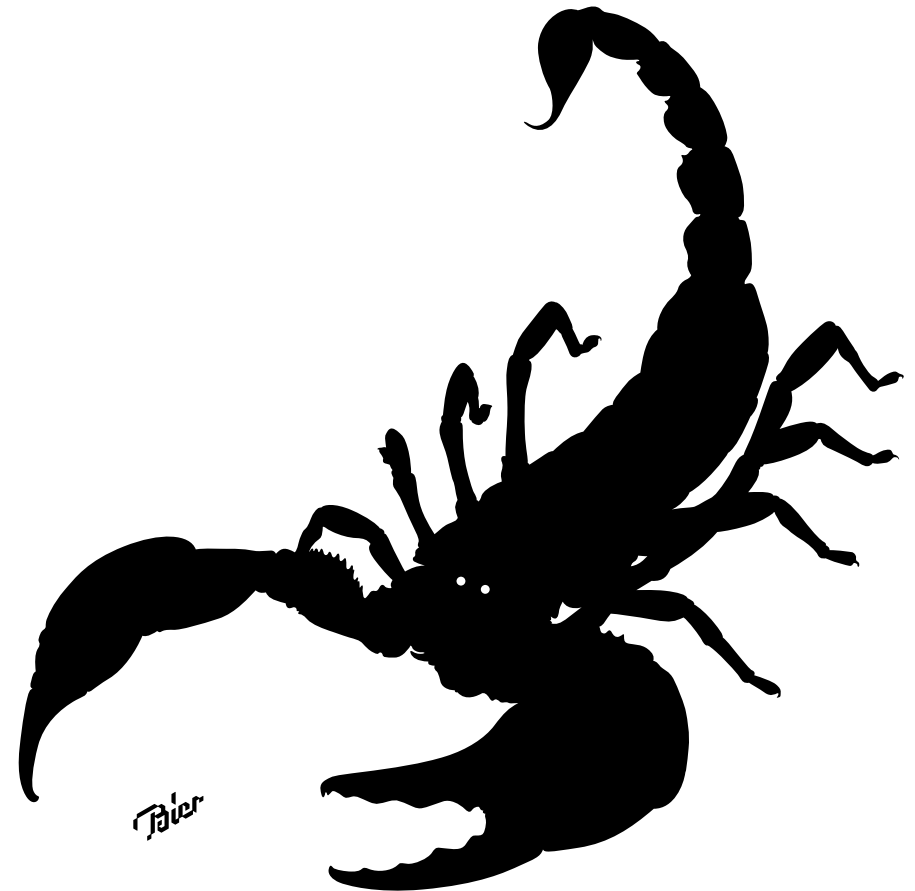
ROTWEIN:

ZWEIGELT:	Brigit und Katrin's (A)	\$7 \ \$25
PINOT NOIR:	Schäfer (D)	\$10 \ \$38
CABERNET:	Broadside (Ca)	\$10 \ \$38
MERLOT:	Grayson (Ca)	\$9 \ \$34
BLAUFRANKISCH:	Brigit und Katrin's (A)	\$8 \ \$30
ZINFANDEL:	Cline Ancient Vines (Ca)	\$10 \ \$38
SANKT LAURENT:	Umathum (A)	\$14 \ \$50
DORNFELDER:	George Schneider Albrecht (D)	\$9 \ \$34

ROSÉ:

ROSÉ:	Umathum (A)	\$12 \ \$40
ROSÉ:	Lucien Albrecht (F)	\$12 \ \$40

Milk	\$2
Afri Cola	\$5
San Pellegrino Aranciata	\$3
Bionade Sparkling Lemonade	\$4
Santa Lucia Mineral Water	1lt. \$6
Apfelsaftschorle (Mineral Water & Apple juice)	\$5 \ \$6
Jacobs Krönung Coffee (Regular & Decaf)	\$2
Hot Teas (Assorted)	\$2
Karamalz	\$5
BRUNCH ONLY: Orange Juice	\$3 \ \$4.5
BRUNCH ONLY: Mimosa (with Orange Juice)	\$8 \ \$35
DIGESTIF: Underberg Bitters	\$4



DRAFT BIER SPECIALS:

Schlenkerla Fastenbier (unfiltered smokebeer) .5 liter	\$11
Schneider Porter Weisse (Tap X) .5 liter	\$11
Schönramer Gold .5 liter	\$10

BOTTLE BIER SPECIALS:

Ettaler Curator .5 liter	\$11
Schwendl Silent Night (pale bock wheat-beer) .5 liter	\$10
Schneider Eisbock Barrique (Tap X) 375 ml	\$30

WINE SPRITZER SPECIAL:

Jardesca Spritzer	\$10 /glass
-------------------	-------------